



**INTO
MATH**
LEARN IT FAST

GRADE 7 - LESSON 3

**ADDING/SUBTRACTING
FRACTIONS WITH
DIFFERENT
DENOMINATORS**

RECALL

A fraction is a part of a whole

Reducing fractions

Converting an improper fraction into a mixed number

Converting a mixed number into a fraction

Adding/subtracting fractions with same denominator

RECALL

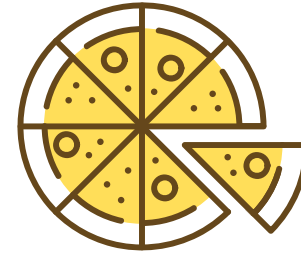
A fraction is a part of a whole

Adding/subtracting mixed numbers
with same denominator

Finding the least common multiple

Performing addition/subtraction on
expressions with brackets

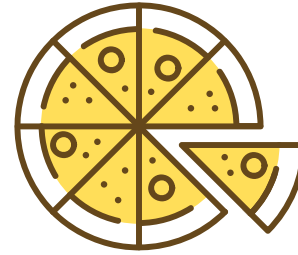
ADDING/SUBTRACTING FRACTIONS (DIFFERENT DENOMINATORS)



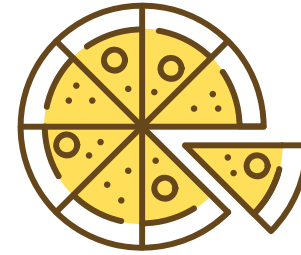
To add or subtract fractions with different denominators:

1. Find the lowest common denominator for the given fractions
2. Set each existing fraction to that lowest common denominator
3. Add or subtract the new fractions
4. Reduce and simplify the final answer

ADDING/SUBTRACTING FRACTIONS (DIFFERENT DENOMINATORS)



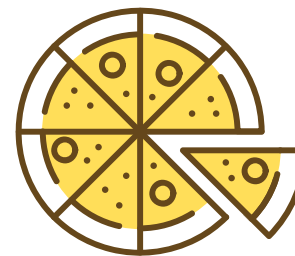
ADDING/SUBTRACTING MIXED NUMBERS (DIFFERENT DENOMINATORS)

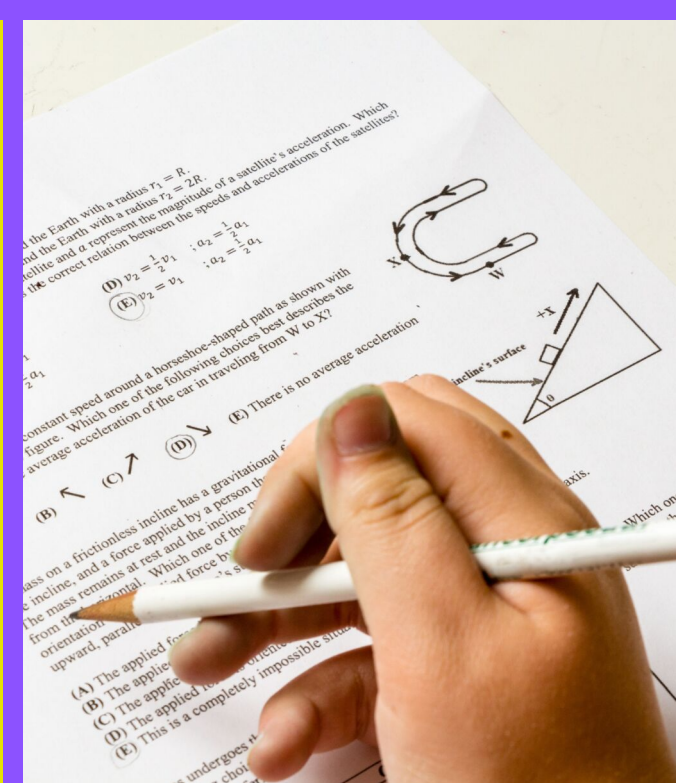


To add or subtract mixed numbers with different denominators:

1. break each mixed number down into the sum of its whole and part (fraction)
2. Get rid of the brackets by performing the necessary operations
3. Add whole numbers and fractions separately
4. Find the sum/difference of the results

ADDING/SUBTRACTING MIXED NUMBERS (DIFFERENT DENOMINATORS)





CONTINUE TO GRADE 7 LESSON 4!

With questions, requests or suggestions
email us at intomath101@gmail.com

For more resources visit
www.intomath.org

you ROCK!

